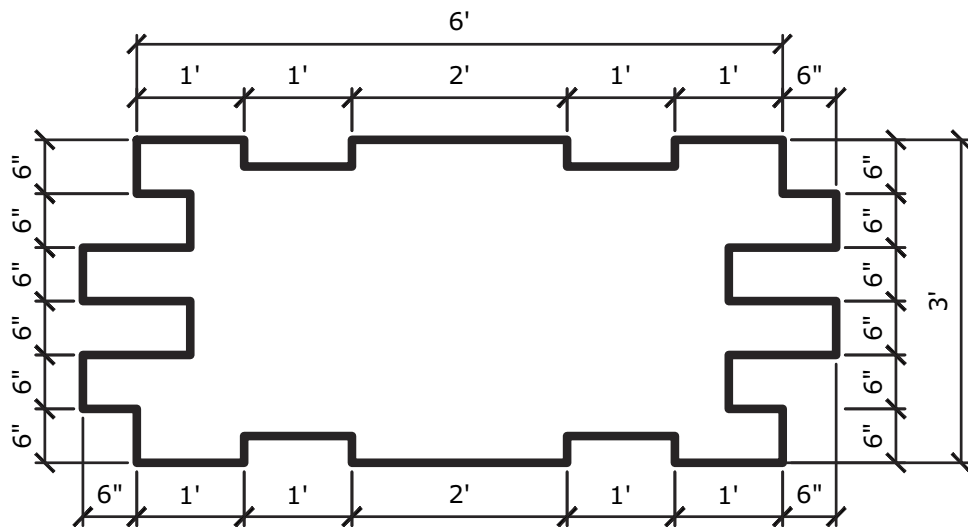
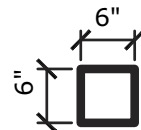


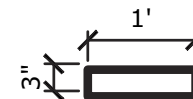
3' COUNTRY LEDGE FORM LINER SPECIFICATIONS SHEET



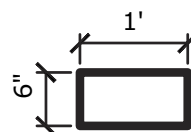
3' Country Ledge Form Liner
Part No.: BFL3636
Patent No. 5,885,502



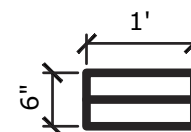
6" x 6" Filler Stone
Part No.: BFL3606



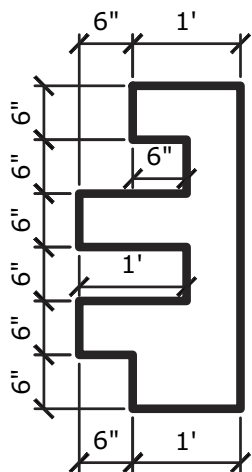
3" x 12" Filler Stone
Part No.: BFL36123



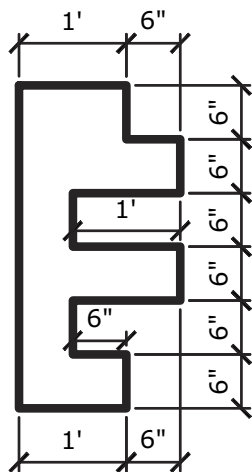
6" x 12" Filler Stone – Single
Part No.: BFL36126S



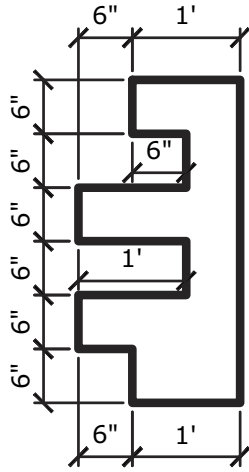
6" x 12" Filler Stone – Double
Part No.: BFL36126D



3' Inside Corner D
Part No.: BFL3636D



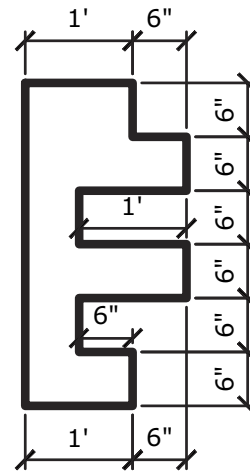
3' Inside Corner E
Part No.: BFL3636E



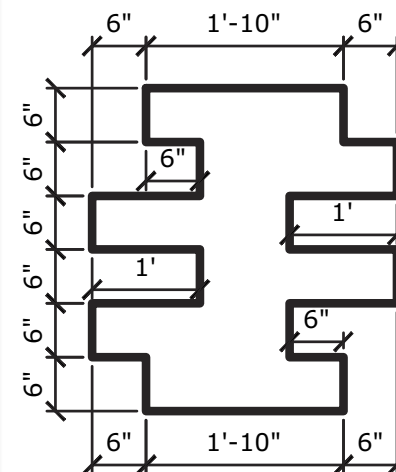
3' Outside Corner A
Part No.: BFL3636A



3' End Piece C
Part No.: BFL3636C



3' Outside Corner B
Part No.: BFL3636B



3' Extension
Part No.: BFL3636X

625 W Illinois Ave
Aurora, IL 60506
800-282-3388
www.butterfieldcolor.com

© 2016 Butterfield Color, Inc. All rights reserved.

Note: All measurements are approximate

BUTTERFIELD
COLOR

Engineered Concrete Performance